

Nomios Security Cup

7-8 maja 2026
Hotel Mazurski Raj

CROWDSTRIKE

ExtraHop

FORTINET



HPE JUNIPER
networking

infoblox

Trellix

nomios

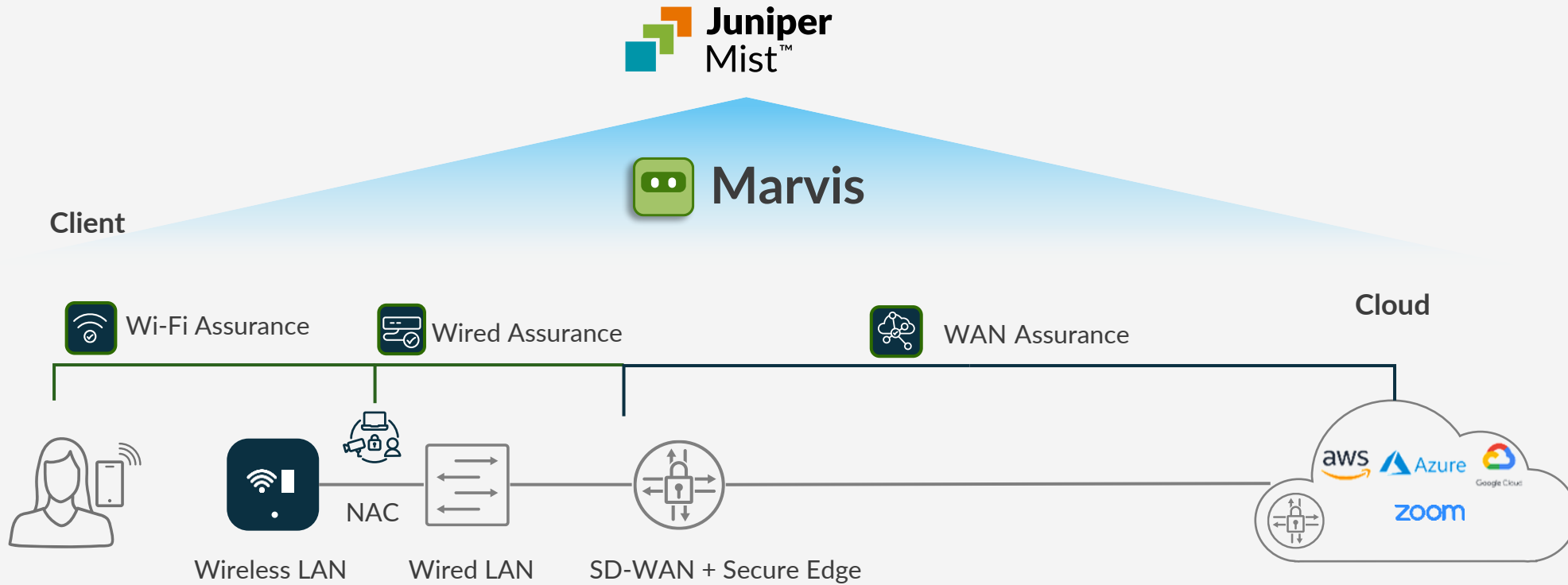
ARROW

ectacom

EXCLUSIVE
NETWORKS

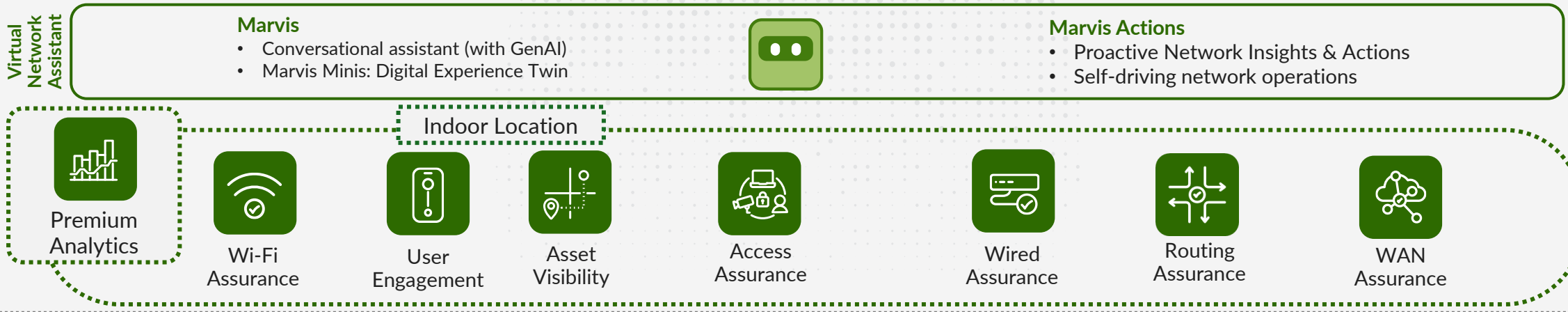
CLICO

Invisible Network

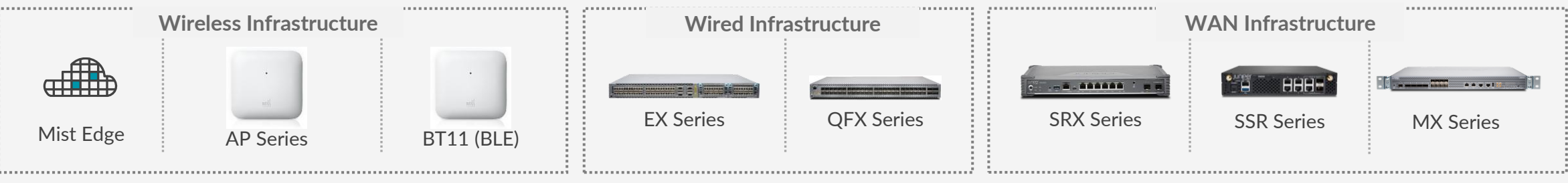




AI-Native Cloud Services

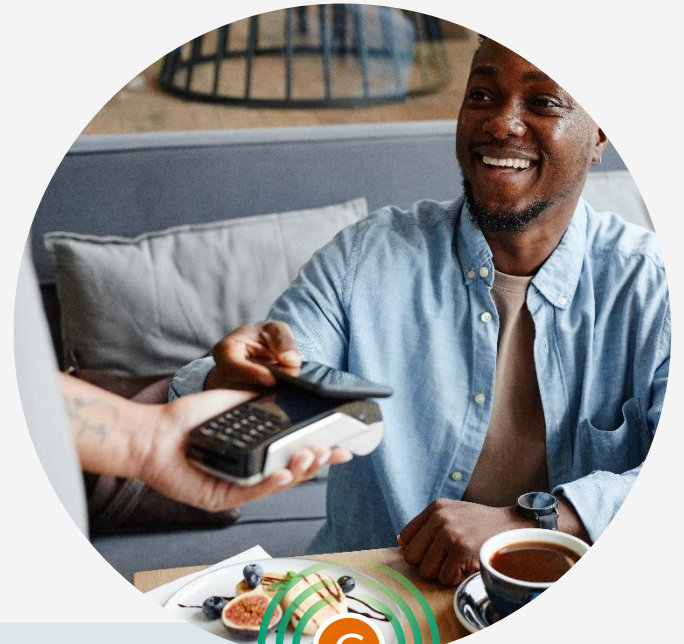
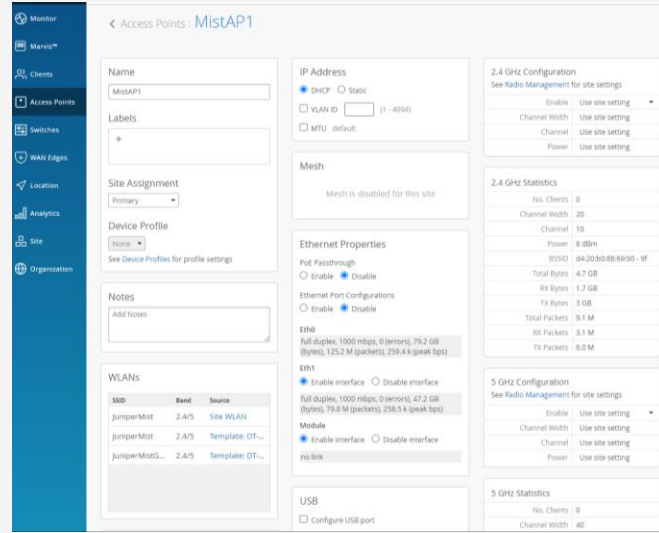


Network Hardware



Juniper Connected Security

Easiest Day 0, 1, 2 Operations in the Industry with Mist



A

B



C

Scan and claim your devices to deploy industry leading Wired, Wireless, and WAN access

Apply policy/config via templates and remotely pushout updates from the Mist portal

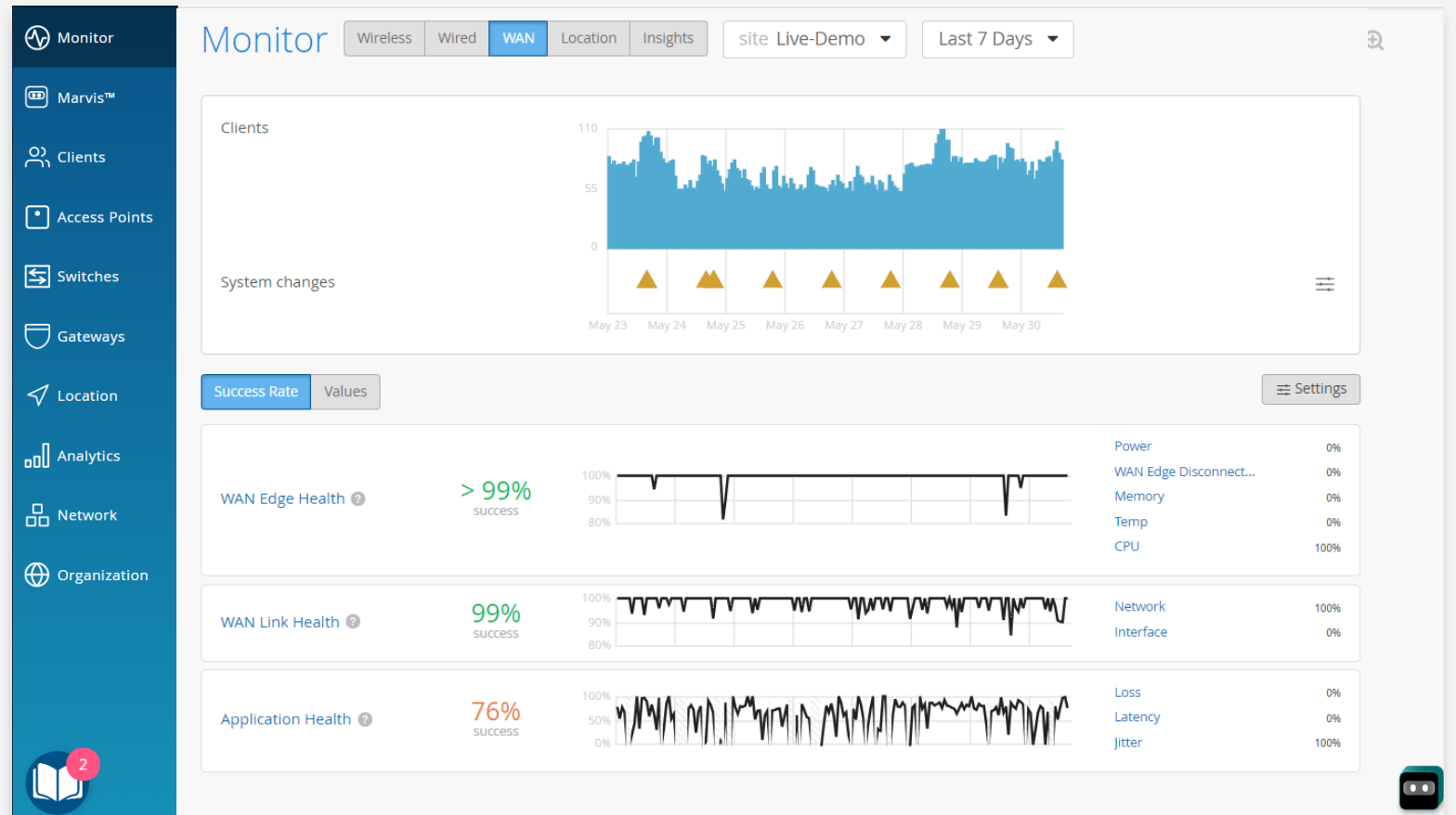
Deliver best-in-class connectivity throughout all your healthcare locations

Assured Experiences for Wi-Fi, Wired, and WAN

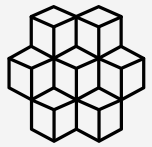
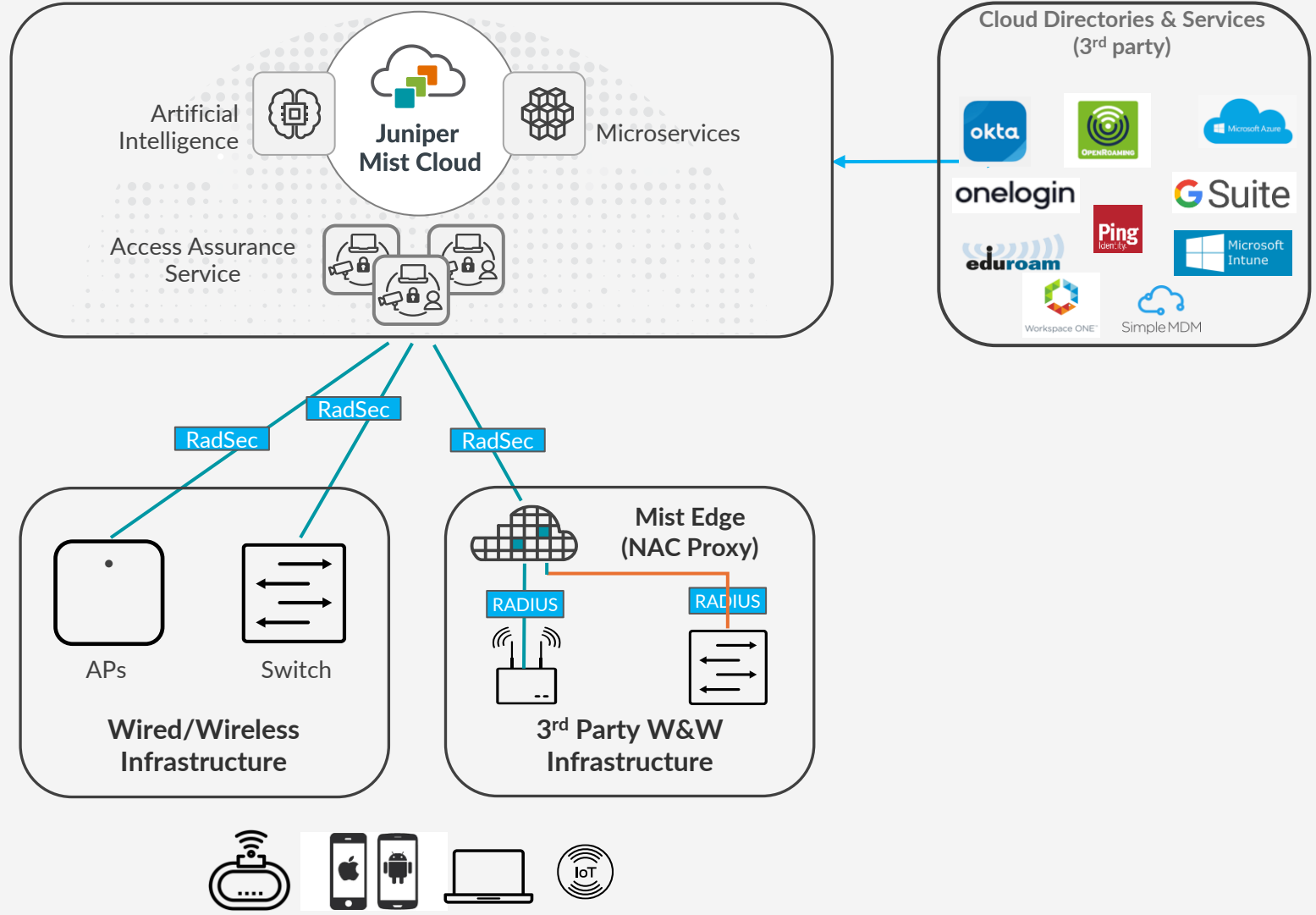
Automated operations make enterprise networks more predictable, reliable, and impactful

Enterprise networks managed out of Mist platform

- ✓ Proactive optimization of wireless performance
- ✓ Dynamic packet capture for rapid IT troubleshooting
- ✓ Automatic root-cause identification
- ✓ Network automation via APIs featuring native **Zoom & Teams** insights



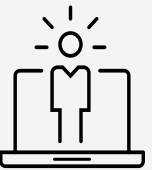
Juniper Mist Access Assurance Framework



Micro-Services based Cloud NAC Offering

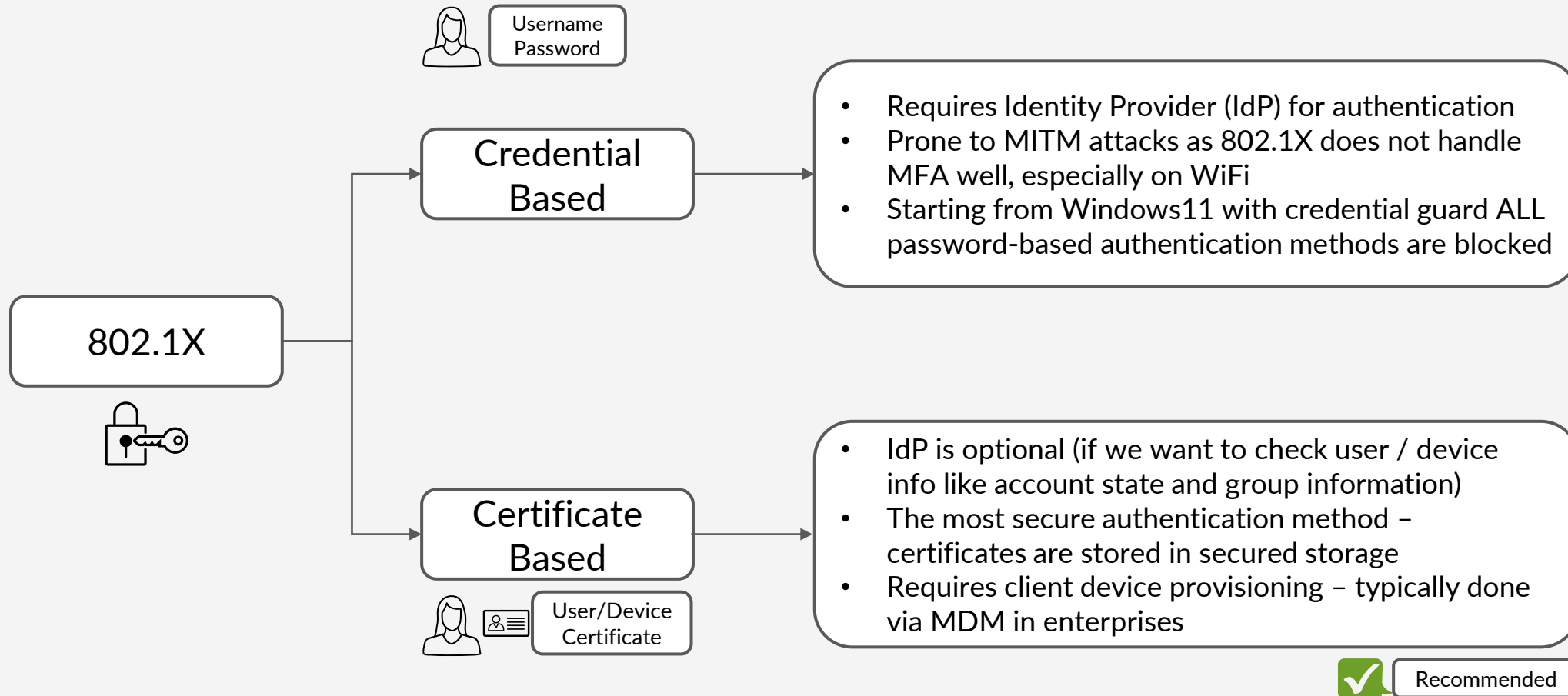


Industry-first AI powered operations



IT-friendly day 0-2 operations

802.1X Use-Cases



MIST Edge



Datapath

Primary use – tunnelling
Secondary use Radius Proxy
* to external Radius Servers
* to MIST NAC

Appliance

Control - NAC

Third Party Devices
Eduroam
Site Survivability

VM

Marvis AI Assistant

Marvis
Actions

Conversational
AI interface

Proactive recommended actions to identify/fix problems before users know they exist.

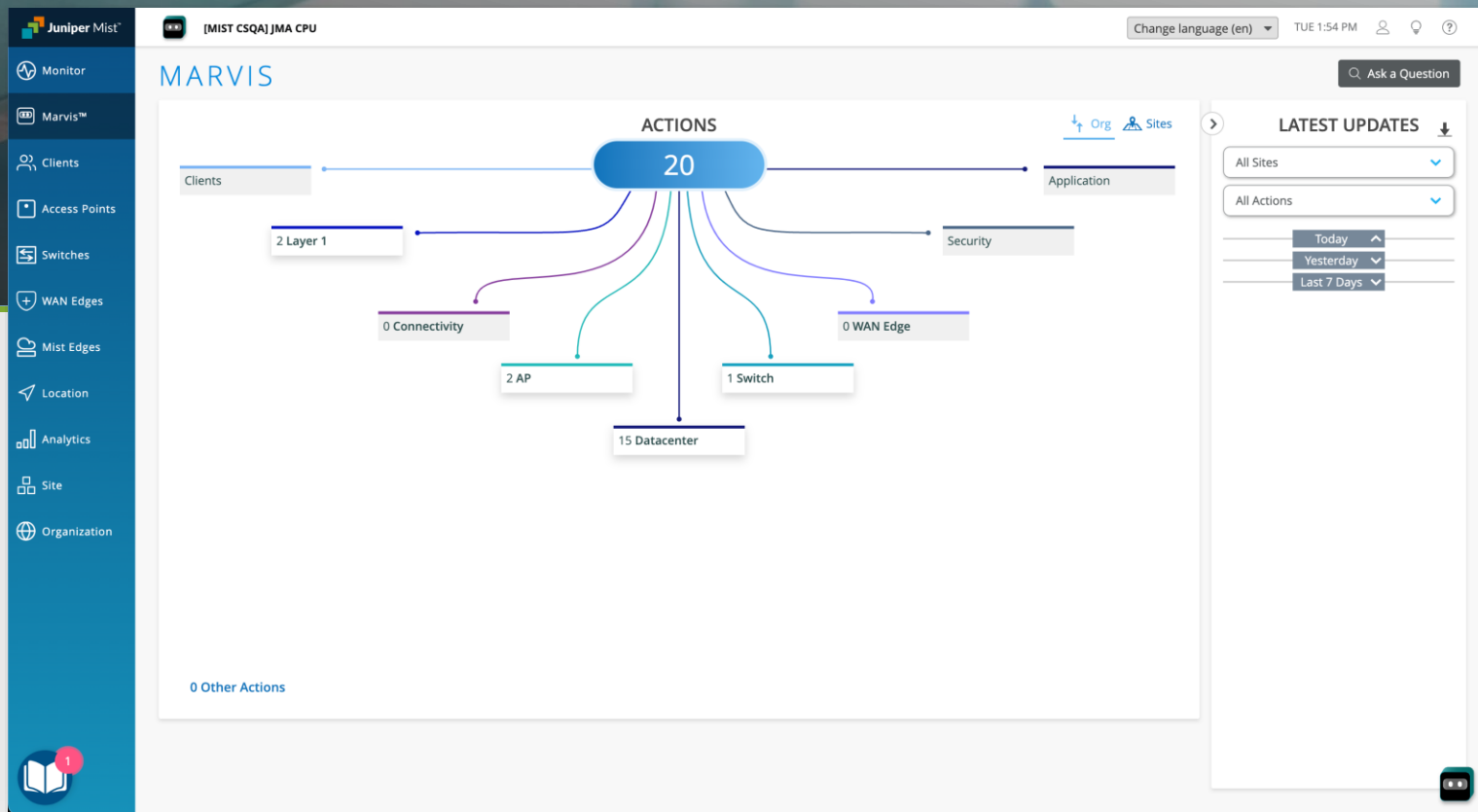
Wired: Bad cables, mismatched ports, L2 loops, DHCP failures, authentication failures, port flaps, ...

Wireless: Firmware issues, offline APs, persistently failing clients, coverage holes, insufficient capacity, bad cables, missing VLANs, ...

WAN: Device issues, bad uplink, MTU mismatch, VPN path down

Self-driving network operations

100% API driven for integration with existing OSS/BSS systems.



Marvis AI Assistant

Marvis
Actions

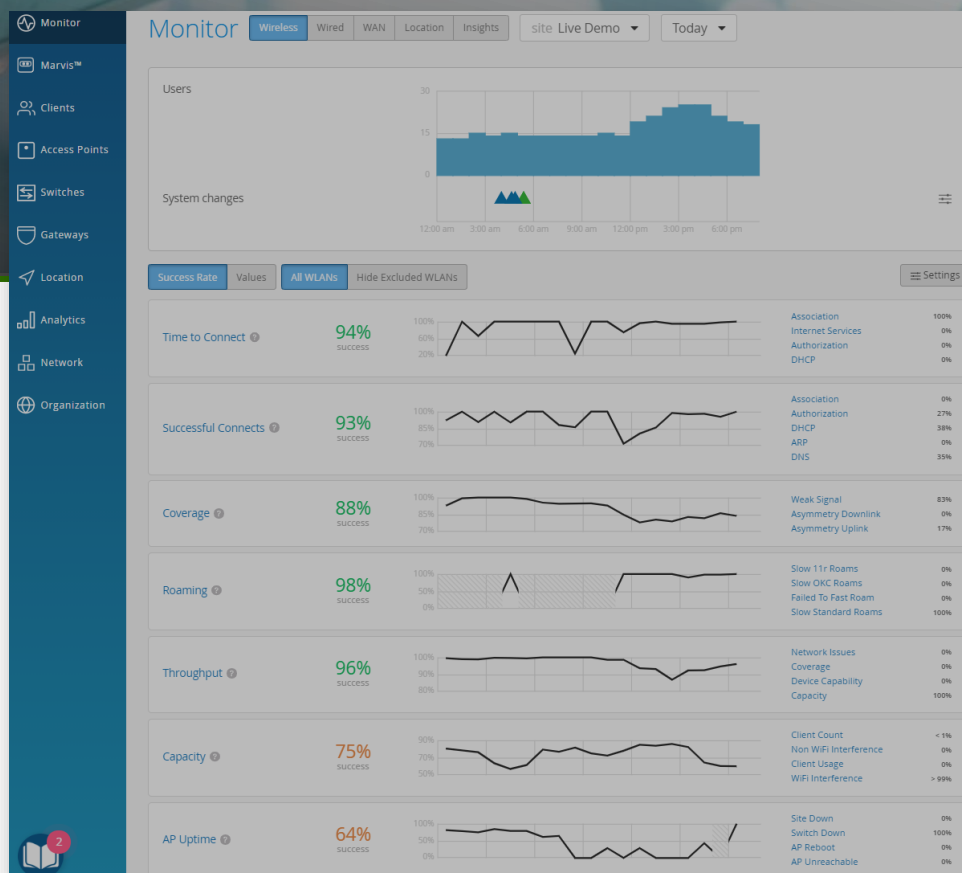
Conversational
AI interface

Natural Language Processing/ Understanding (NLP/NLU) transforms how IT interacts with the network.

Streamline operations and boost operator experiences.

Provide deeper understanding of issues with correlation across domains.

Simple knowledge base / documentation queries (using GenAI/LLM).



The screenshot shows the Marvis AI Assistant chat interface. It displays a list of top users at a site Live-Demo for teams on May 23rd from 12:00 AM to May 30th 3:43 PM. The list includes:

- MacBook-Pro (Client Mac: 5ce91ea3e18d IP: 10.100.1.13 Site: Live-Demo)
- Apple (Client Mac: 76:96:67:f1:56:ca IP: 10.100.1.59 Site: Live-Demo)

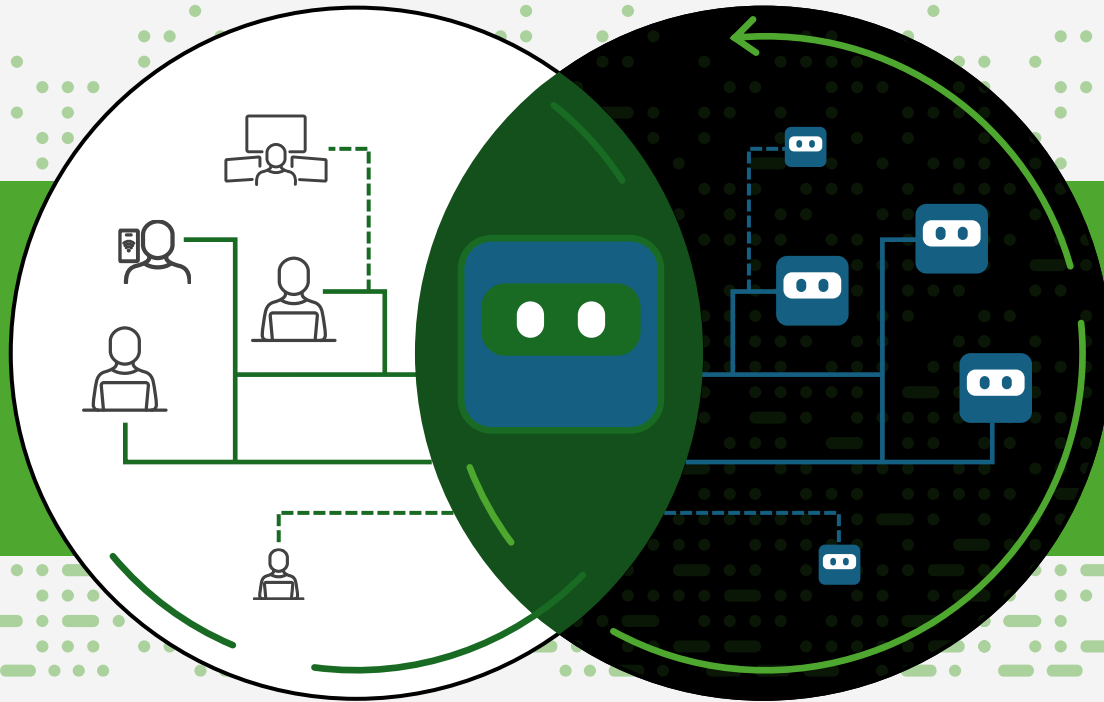
Below the list, there are troubleshooting suggestions:

- Troubleshoot application teams for MacBook-Pro on May 23rd 12:00 AM to May 30th 3:43 PM.
- I found the following teams sessions for MacBook-Pro on May 23rd 12:00 AM to May 30th 3:43 PM. Please select one.
- 6:18 PM to 6:30 PM, May 28th (Usage: 236.5 kB)
- 6:16 PM to 6:18 PM, May 28th (Usage: 145.8 kB)
- Troubleshoot application teams for MacBook-Pro on May 28th between 6:16 PM to 6:18 PM.

The chat interface also includes a search bar, a "Message" input field, and a "Overall" status indicator.

Marvis Minis — Only AI Native Digital Experience Twin

What is it?



Proactively simulates user experience digitally to instantly validate network configurations and find/detect problems without users being present on the network. Adds a new data source for Marvis.

Why does it matter?



Find and fix problems quicker — better uptime, saving time and \$\$



Best user experiences through proactive validation and remediation



Boost value from network with lower investment costs



Config changes are no longer a “black hole”: digitally validated and assured

Mist Monitoring and Analytics

What Are Service-Level Expectations?

- Metrics used to track user network experience
- Consist of sub-metrics called classifiers and sub-classifiers



Wi-Fi Assurance SLEs

- Time to Connect
- Successful Connects
- Throughput
- Coverage
- Capacity
- Roaming
- AP Health



Wired Assurance SLEs

- Throughput
- Successful Connect
- Switch Health



WAN Assurance SLEs

- WAN Edge Health
- WAN Link Health
- Application Health

Digital Sovereignty

Mist Cloud jest hostowany w AWS Frankfurt dla klientów z UE

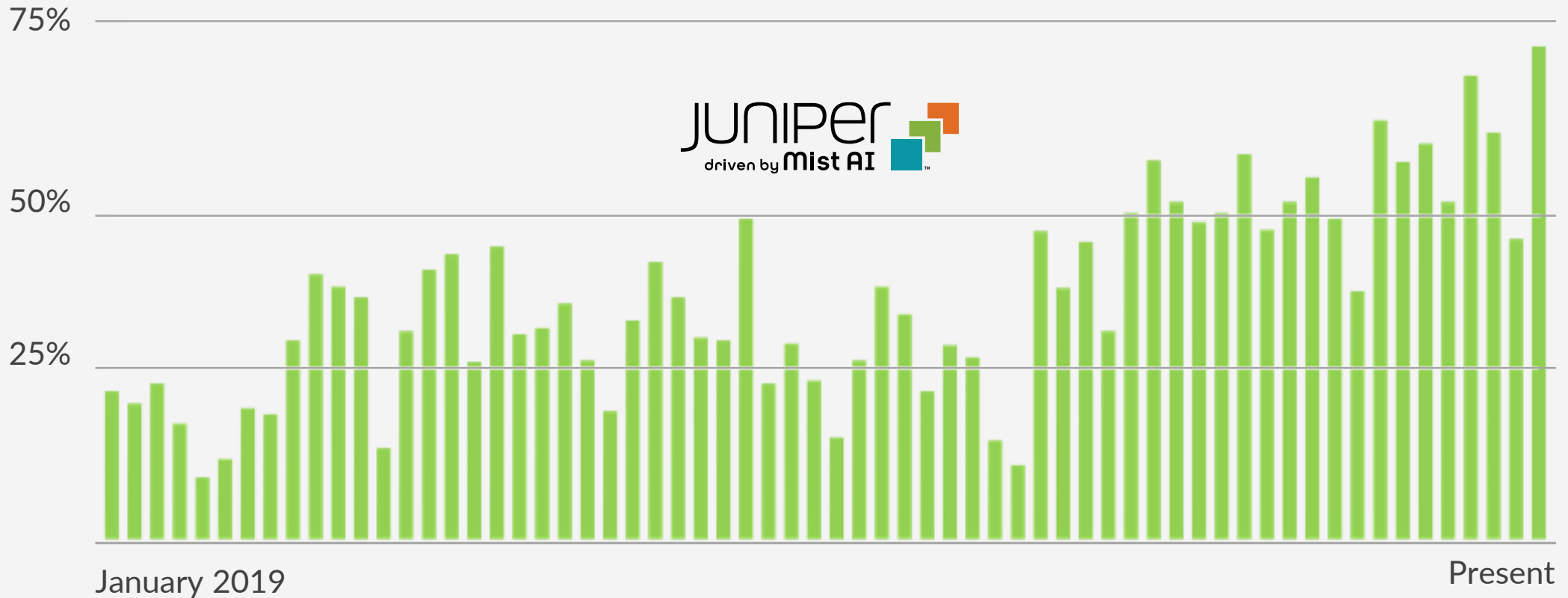
Klienci, których siedziba główna (lub główny adres podany firmie Juniper) znajduje się w UE, są automatycznie konfigurowani do hostowania w centrum danych na terenie UE. Oznacza to, że dane urządzeń klienta oraz pozostała część instancji chmurowej Juniper będą hostowane w UE. Dodatkowo klienci mogą wybrać hosting oparty w UE, nawet jeśli ich siedziba główna lub główny adres podany firmie Juniper nie znajdują się w UE.

https://www.mist.com/wp-content/uploads/Mist_AI_Trust_Tech_Brief_fin.pdf

AI-DRIVEN SUPPORT

It keeps getting better with time

Percent of customer IT tickets proactively solved with AI



HPE Juniper Mist Wi-Fi 7 Access Point Portfolio

Price ↑

New Dual-Platform



AP-723H
Wall Plate

- Tri Band 2x2
- Dedicated Scan
- Omni BLE
- Dual IOT Radios
- 2;5GbE PoE + 2 x 1GbE
- Wall Jack & Desktop Deployment
- Dual-Platform (Mist or Aruba Central)

New



AP17
Wall Plate

- Tri Band 2x2
- Dedicated Scan
- Omni BLE
- Dual IOT Radios
- 10GbE PoE + 1GbE PSE + 2 x 1GbE
- Wall Jack & Desktop Deployment

New



AP27/E
Performance

- Tri Band 2x2
- Dedicated Scan
- Omni BLE
- Dual IOT Radios
- 10GbE PoE + 1GbE
- Ext Antennas (AP27E)



AP36/M
Performance

- Tri Band 4x4 5GHz + 6GHz & 2x2 2.4GHz
- Dedicated Scan
- Omni BLE
- Dual IOT Radios
- 10GbE PoE + 1GbE PSE
- Dir+Ext Antennas (AP36M)



AP37
Performance

- Tri Band 4x4 5GHz + 6GHz & 2x2 2.4GHz
- Dedicated Scan
- vBLE
- Dual IOT Radios
- 10GbE PoE + 1GbE PSE



AP47/D/E
Premium

- Tri Band 4x4
- Dual 5GHz + 6GHz
- Dedicated Scan
- vBLE
- Dual IOT Radios
- UWB
- Dual 10GbE PoE Failover
- Dir Antennas (AP47D)
- Ext Antennas (AP47E)



AP66/D

- Tri Band 2x2
- Dedicated Scan
- Omni BLE
- Dual IOT Radios
- 10GbE PoE
- IP67 Compliant
- Dynamic Dir Antennas (AP66D)

Dziękuję za uwagę!

CROWDSTRIKE

ExtraHop

FORTINET



HPE JUNIPER
networking

infoblox

Trellix

nomios

ARROW

ectacom

EXCLUSIVE
NETWORKS

CLICO