

HPE Networking – Juniper Networks po połączeniu z HPE

Kamil Kułak
Commercial Account Manager
HPE Networking



Confidential disclosure agreement

- The information contained in this presentation is considered Confidential Information of Hewlett Packard Enterprise (HPE) and is subject to the Confidentiality terms and conditions in your HPE vendor or partner agreement.
- This presentation may be shared with HPE Authorized Service Providers and Channel Partners in hard-copy or electronic format for their internal training purposes only.
- This presentation is NOT to be used as a 'leave behind' for HPE external customers.
- The information in the presentation may only be shared verbally with HPE external customers who are under CDA and should NOT be used for commercial purposes.
- Do not remove any classification labels, warnings or disclaimers on any slide or modify this presentation to change the classification level.
- Do not remove this slide from the presentation.
- HPE does not warrant or represent that it will introduce any product to which the information relates.
- The information contained herein is subject to change without notice.
- HPE makes no warranties regarding the accuracy of this information.
- The only warranties for HPE products and services are set forth in the express warranty statements accompanying such products and services.
- Nothing herein should be construed as constituting an additional warranty.
- HPE shall not be liable for technical or editorial errors or omissions contained herein.
- Strict adherence to the HPE Standards of Business Conduct regarding this classification level is critical.



Przed połączeniem

The HPE logo is displayed in white text on a dark blue rectangular background.

Compute - HPE ProLiant, HPE Synergy, HPE Apollo / HPE Cray, HPE Superdome Flex

Storage - HPE Alletra, HPE Nimble Storage, HPE Primera, HPE MSA, StoreOnce

Software i management - HPE GreenLake, HPE InfoSight, HPE OneView

The HPE Aruba networking logo is displayed in white and orange text on a dark blue rectangular background.

Wired – przełączniki CX

Wireless – punkty dostępowe zewnętrzne i wewnętrzne

Software i management – Aruba Central, ClearPass (NAC)

SD-WAN i SASE – optymalizacja połączeń między oddziałami a chmurą

Dlaczego HPE kupiło Juniper Networks?



Lider w dziedzinie AI i Cloud: Juniper posiada platformę **Mist AI**, która jest uważana za rynkowy wzorzec w automatyzacji sieci i diagnostyce opartej na sztucznej inteligencji. HPE integruje ją ze swoją ofertą Aruba Networking, aby stworzyć spójny system od brzegu sieci (edge) aż po chmurę.



Ekspansja w centrach danych i u operatorów: HPE zyskuje silną pozycję w obszarach, gdzie wcześniej dominował Juniper – m.in. w nowoczesnych routerach i przełącznikach dla wielkich centrów danych (tzw. AI factories) oraz u dostawców usług telekomunikacyjnych.



Bezpieczeństwo (SASE i Zero Trust)

Połączenie rozwiązań firewall od Junipera (seria SRX) z systemami kontroli dostępu HPE Aruba pozwala na oferowanie kompleksowej architektury bezpieczeństwa.



Podwojenie biznesu sieciowego

Dzięki akwizycji segment sieciowy HPE staje się jego nowym silnikiem wzrostu. Oczekuje się, że po połączeniu będzie on generował ponad 50% zysku operacyjnego całej firmy.

Gartner o Juniper Networks

Figure 1: Magic Quadrant for Enterprise Wired and Wireless LAN Infrastructure



Figure 1: Magic Quadrant for Data Center Switching



Figure 1. Magic Quadrant for Hybrid Mesh Firewall



Gartner, Magic Quadrant for Enterprise Wired and Wireless LAN Infrastructure, Mike Leibovitz, Christian Canales, Nauman Raja, Tim Zimmerman, 25 June 2025.

Gartner, Magic Quadrant for Data Center Networking, Andrew Lerner, Simon Richard, Nauman Raja, Jorge Aragon, Jonathan Forest, 31 March 2025.

Gartner, Magic Quadrant for Hybrid Mesh Firewall, Rajpreet Kaur, Adam Hills, Charanpal Bhogal, Esraa ElTahawy, Feng Gao, Tiffany Taylor, 25 August 2025.

Gartner does not endorse any vendor, product or service depicted in its research publications, and does not advise technology users to select only those vendors with the highest ratings or other designation. Gartner research publications consist of the opinions of Gartner's research organization and should not be construed as statements of fact. Gartner disclaims all warranties, expressed or implied, with respect to this research, including any warranties of merchantability or fitness for a particular purpose.

GARTNER is a registered trademark and service mark of Gartner, Inc. and/or its affiliates in the U.S. and internationally, and MAGIC QUADRANT is a registered trademark of Gartner, Inc. and/or its affiliates and are used herein with permission. All rights reserved.

This graphic was published by Gartner, Inc. as part of a larger research document and should be evaluated in the context of the entire document. The Gartner document is available upon request from Juniper Networks.



Po połączeniu



Compute - HPE ProLiant, HPE Synergy, HPE Apollo / HPE Cray, HPE Superdome Flex

Storage - HPE Alletra, HPE Nimble Storage, HPE Primera, HPE MSA, StoreOnce

Software i management - HPE GreenLake, HPE InfoSight, HPE OneView



Wired – przełączniki CX

Wireless – punkty dostępowe zewnętrzne I wewnętrzne

Software i management – Aruba Central, ClearPass (NAC)

SD-WAN i SASE – optymalizacja połączeń między oddziałami a chmurą



Wired – przełączniki EX

Wireless – punkty dostępowe zewnętrzne I wewnętrzne Mist

Mist AI – chmurowa platforma zarządzająca posiadająca natywną sztuczną inteligencję

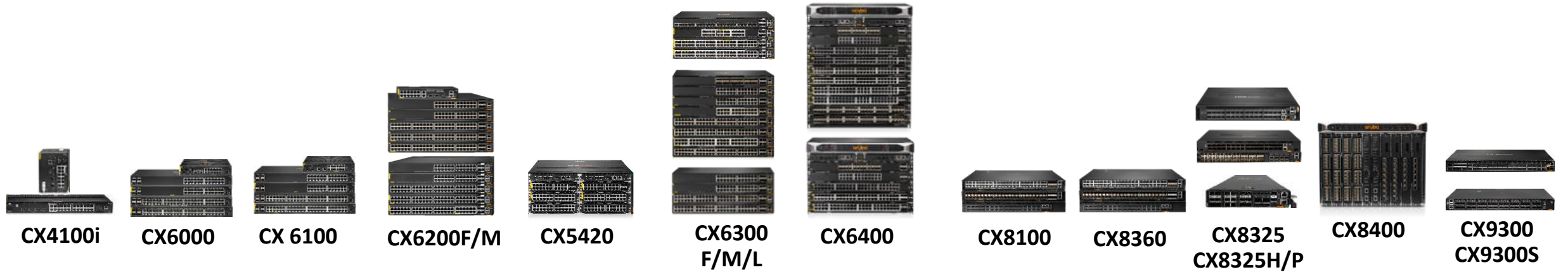
Data Center – przełączniki QFX oraz Apstra

Routing i WAN – routery MX, ACX, PTX

SD-WAN – Session Smart Routing czyli zarządzanie ruchem bez tunelowania

Security – firewalle SRX

Campus LAN – Combined offer HPE Aruba + Juniper



CX4100i

CX6000

CX 6100

CX6200F/M

CX5420

CX6300
F/M/L

CX6400

CX8100

CX8360

CX8325
CX8325H/P

CX8400

CX9300
CX9300S

Access

Distribution / Core



EX4000

EX4100-F

EX4100-H

EX4100

EX4400



EX4400-24X

EX4600
EX4650

QFX5110
QFX5120

EX9200

QFX5130
QFX5700



Campus Management (1/2)

Aruba Central
Search

CLIENTS

k8s-master

Information about the client.

Site

DC1-Nashua

Network

Good

US17L6B025

Applications

1

Security

Low Risk

Experience

● Connected, Experience is Good

Connected Since
15 hours ago

Properties

Host Name	User Name
k8s-master	00:50:56:bf:60:cb
MAC Address	Type
00:50:56:bf:60:cb	Wired
IP Address	Virtual machine
192.168.10.100	Access Role
	-

Virtualization

Host Server	Data Center
piano-01-...	QA
VSphere	Vendor
piano-vcsa.lab.plexxi.com	VMware
Tags	
Production:Bookinfo	

Classification

Category	Function
Computers & Servers	Server
Vendor	Model/OS
VMWare	VMWare
Tags	

Connectivity

Events

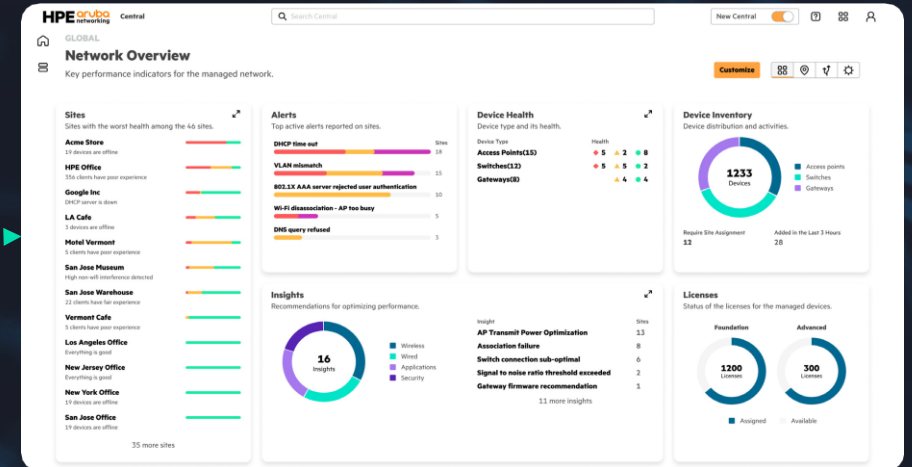
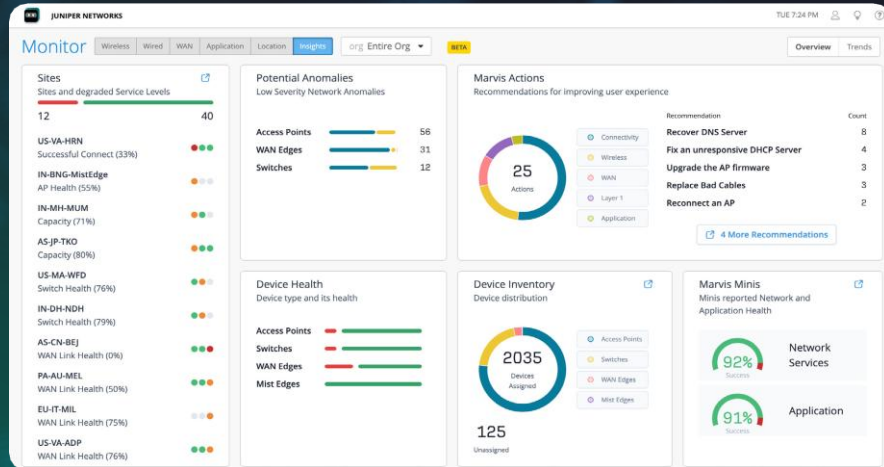
Occurred	Category	Event



Campus Management (2/2)



DUAL PLATFORM WI-FI ACCESS POINT (2H2026)



Data Center Switching

QFX5K family

Typically used in Enterprise and SP EVPN-VXLAN Fabrics

Typically used in Hyperscale / Cloud Major IP Fabrics and AI DC Fabrics

TD2+



QFX5110

1/10/100GigE

TD3



QFX5120

1/10/25/100G

TD4



QFX5130
QFX5700

100/400G
Modular
1/10/25/50/
100/400G

TD5



QFX5140

400/800G

TH1



QFX5200

100G

TH2



QFX5210

100G

TH3



QFX5220

100/400G

TH4



QFX5230

400G

TH5



QFX5240

800G

TH6



QFX5250

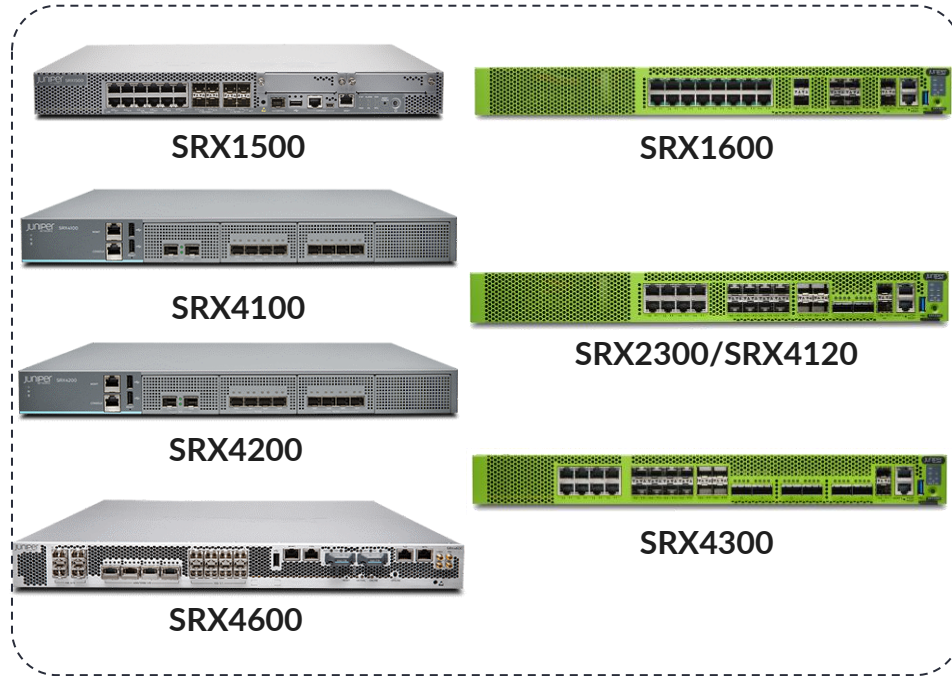
1.6T



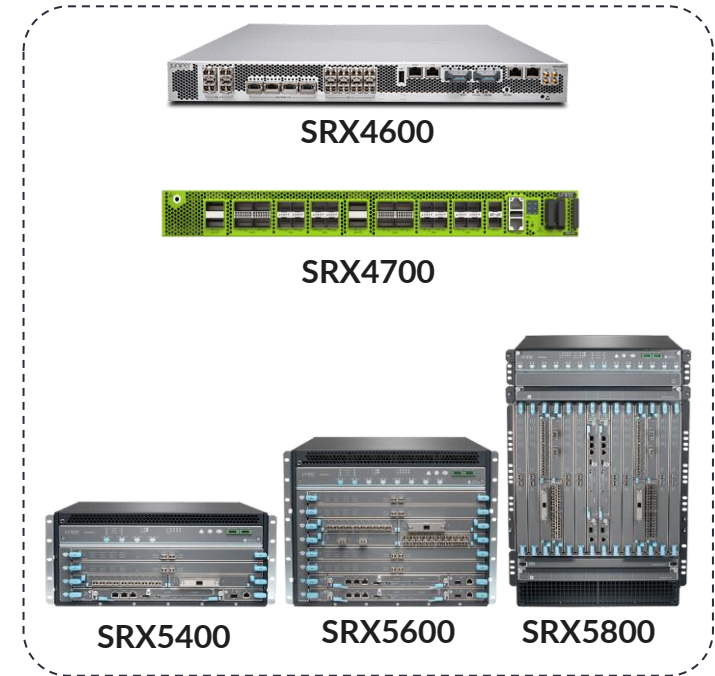
Juniper Apstra™

Juniper Connected Security - Platforms

Campus & Scale-Out DC/Cloud/SP



Operator edge/Mega-DC (Hybrid forwarding platforms)



Cloud Firewalls



vSRX



cSRX

Centralised Security Management



Security Director

DDoS Mitigation Platform



Smartwall One

Scale-out controller DDoS Mitigation / SecIntel



MX304



PUBLIC TLP: CLEAR
MX10K4

HPE Juniper Networking WAN Transformation

Experience-First Networking



Automation



Performance



ACX7100-32C
ACX7100-48L
ACX7024X
ACX7024
ACX 7020

ACX



ACX7509
ACX7348
ACX7332



MX204



MX304

MX



MX10004/8



PTX10004/8/16



PTX10001-36MR



PTX10002-36QDD

PTX



Appl-specific
Cable & Optics



Client
Optics

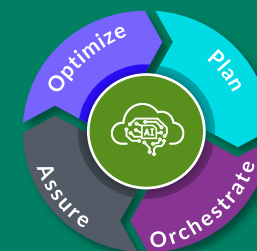


Coherent
Optics
(ZR/ZR+)

Juniper Optics



Juniper Paragon

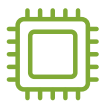


WAN AI-Ops



Sustainability

Optimized Silicon



Active Assurance

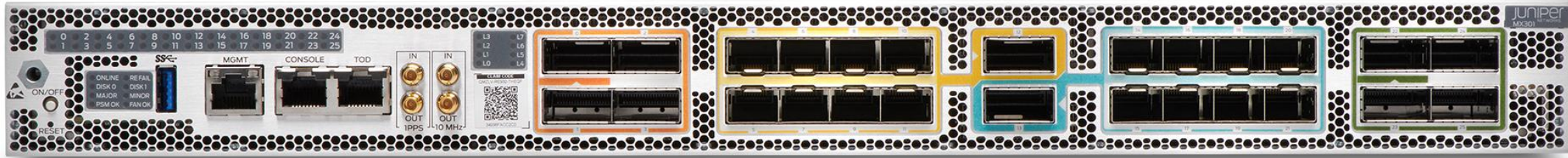


Adaptive Power



Multi-layer Efficiencies

MX301



1 RU

1.6 TBps

Complete Junos Protocol Stack

L2, L3 VPN, SRv6, MPLS,
EVPN, Tunnels and
Filters

Security without Compromise

Line-Rate MACSec
600G IPSEC
FIPS/CC Ready

Flexible Front Panel

1G Jumbo Frames
Native 1/10G SFP
QSFP 100/400G

BNG Support

16K subscriber scale

**OpenConfig, Telemetry, and
NETCONF**

Robust Automation Support
Paragon and Mist automation

Flexible System Pricing

PAYG Pricing Optimized
starting 800 Gbps

Dziękuję

Kamil Kułak

Territory Account Manager

+48 793 011 566

kamil.kulak@hpe.com



PUBLIC TLP:CLEAR

© 2026 Hewlett Packard Enterprise Development LP